

# ISLAND-WIDE COLLABORATION FOR INVASIVE PLANT MANAGEMENT TO SUPPORT LOCAL ECOSYSTEMS

Elizabeth C. Buck<sup>1</sup>, Kelly A. Omand<sup>1,2</sup>, Sarah T. Bois<sup>2,3</sup>

<sup>1</sup>Nantucket Conservation Foundation, <sup>2</sup>Nantucket Invasive Plant Species Committee Co-Chair, <sup>3</sup>Linda Loring Nature Foundation



## Who we are:

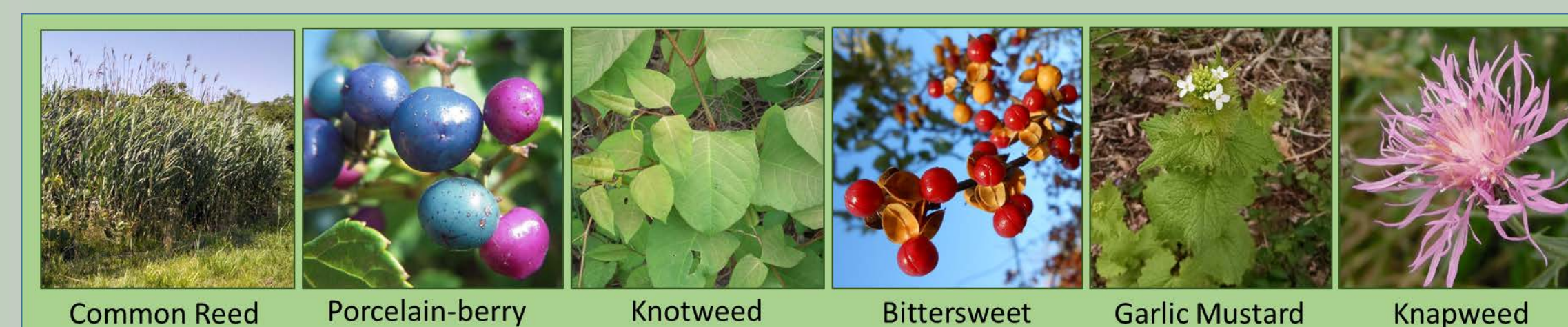
The Nantucket Invasive Plant Species Committee (IPSC), a standing committee of the Nantucket Biodiversity Initiative (NBI), brings together citizens and organizations involved in non-native invasive plant species identification, management, research, education and eradication. More info:

<https://www.nantucketbiodiversity.org/ipsc>



## What are non-native invasive plants?

Invasive plants that are species that are not native to an area, but have been generally introduced by human activities. They have traits that make them well equipped to out-compete native species for space and resources. Lacking natural controls such as diseases and pests, invading plants can cause aesthetic, biological, chemical, and economic damage to natural areas and become troublesome weeds in your yard. They are commonly introduced to gardens as landscape plants or as hitchhikers in soil, compost, and seed packets.



## What's at Stake?

Nantucket boasts some of the rarest and most fragile habitats in the northeast. These habitats are at risk of invasion, which may lead to the reduction and/or loss of rare and endangered species. By preventing the establishment of exotic invasive species, we can help preserve Nantucket's unique natural characteristics.

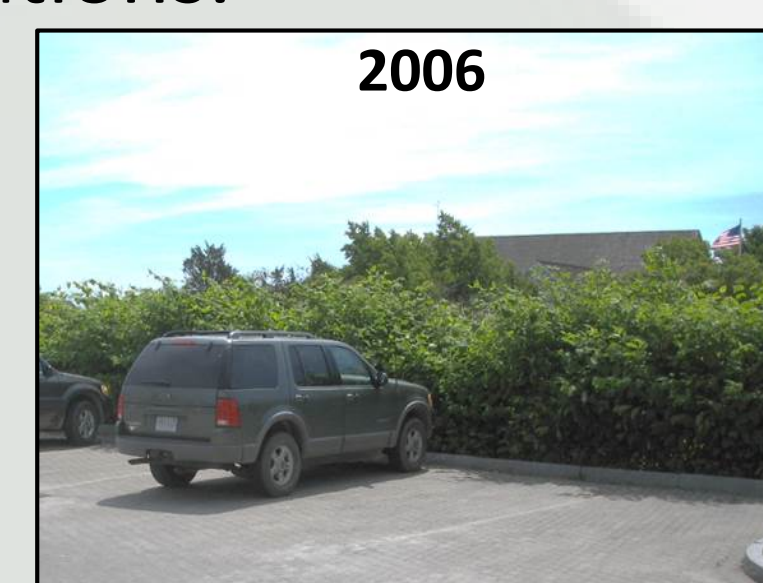
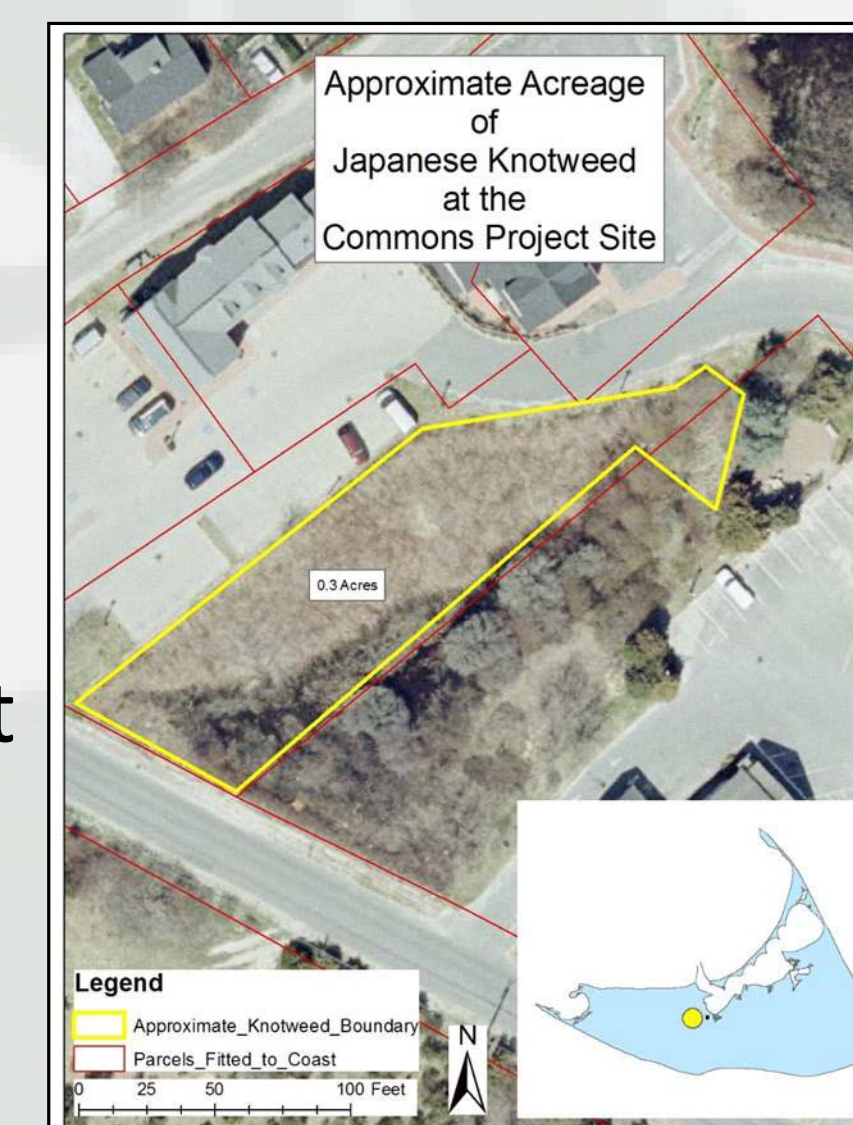
## IPSC Public Outreach & Education:

- ❖ Provide Invasive plant identification and management workshops and educational talks,
- ❖ Mentor local students and facilitate class projects,
- ❖ Staff booths at events such as the local Island Fair and Spring Fest to provide invasive & native plant info,
- ❖ Developed a "Landscaping with Native Plants on Nantucket" pamphlet detailing native species and uses,
- ❖ Provided technical expertise in the form of an invasive plant list for the wetlands regulations to the Town of Nantucket Conservation Commission,
- ❖ Worked with the Nantucket DPW to adjust mowing regimes along bike paths to reduce spotted knapweed,
- ❖ Coordinated with Waste Options Management (the Nantucket landfill operator) to provide an invasive plant disposal dumpster to facilitate high-temperature composting of weeds.

## Case Study of Collaboration: Japanese Knotweed Commons Project

In 2006, the IPSC decided to help control and potentially eradicate the non-native invasive Japanese knotweed (*Fallopia japonica*) on a small parcel (0.3 acres) located between Pleasant Street and parking/access roads for Nantucket Commons and Nantucket Bank.

IPSC worked together with the property owners by using non-chemical techniques over the course of three years to help remove knotweed in the upland. With the assistance of volunteers, contracted landscapers, and finally grass seed propagation, Japanese knotweed was almost completely removed to create an open lawn by 2010 exceeding all expectations.



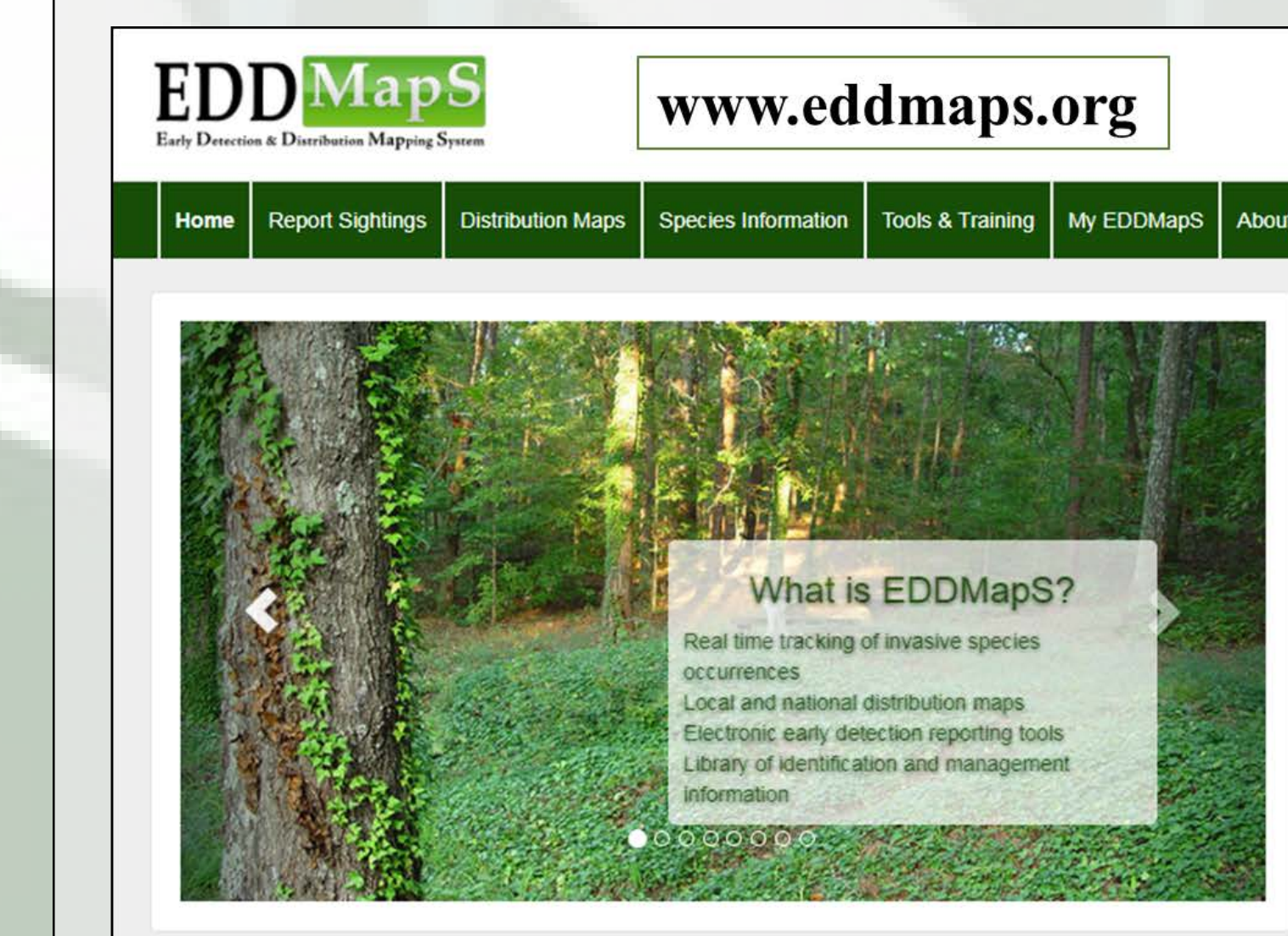
## How to Help:

The IPSC coordinates invasive plant management activities where help from the public is much appreciated. Garlic mustard hand pulling in the spring (May-June) and spotted knapweed digging (June-August) are two of our largest projects; over the years many students and other volunteers have helped us reduce invasive weed populations in key areas. For more info contact the IPSC Co-Chairs at the NBI website : [www.nantucketbiodiversity.org/ipsc](http://www.nantucketbiodiversity.org/ipsc)



## Help Map Island Invasive Species:

The IPSC encourages citizens and local conservation groups to report invasive species sightings to the EDDMapS online database. Reporting helps us track the spread of invasives and target our efforts locally and regionally. Visit the EDDMapS website to learn more and help us track island weeds!



**Step 1:**  
Sign up for an EDDMapS Account to make reports online and view maps of local invasive species reports.



**Step 2:**  
Download "Outsmart Invasives" App to your smartphone & link to your EDDMapS account.

## In Your Yard:

Be a responsible gardener; look for native landscape plants and know the contents of your imported soil and seeds. Replace invasives with natives when it's time for garden improvements. Make sure to dispose of invasive species properly by bagging them up and disposing of them in the Invasive Species Dumpster at the Nantucket Landfill.